

上海世銓实业有限公司

Integra
TECHNOLOGIES, INC.

High Technology
Radio Frequency Power
Semiconductor

Integra

TECHNOLOGIES, INC.

Integra's mission is to be the global technological leader in the design, development and manufacture of high performance RF power transistors serving the radar, avionics and wireless communications industries.

It Starts with a Strong Foundation

Founded in 1997, Integra Technologies has years of proven leadership in high performance and high reliability products. Our manufacturing expertise with high reliability gold metallization wafer fabrication techniques provides the foundation for designing superior RF products for the demanding military and aerospace markets. Integra RF engineers continue to make innovative products ranging from discrete RF transistors, and integrated modules to complete multi-kilowatt power amplifiers. Our expert engineering background coupled with our design flexibility is well suited to meet changing market demands, and makes Integra Technologies the clear leader in RF performance and repeatability.

Why Integra Technologies?

History of Success –Founded in 1997 with patented state-of-the-art technology we heavily invest in R&D to advance our technology and keep pace with demanding markets.

Integra excels by providing the highest power, gain and efficiency devices available. Extensive technical support and application specific designs make Integra the preferred choice for your system.

Proven Supplier

Defense markets expect 10–20 year product life cycles and Integra Technologies has decade long relationships with multiple Tier 1 Defense Contractors.

Diverse Product Portfolio

The only RF semiconductor manufacturer that can provide discrete packaged transistors, integrated pallet modules and complete power amplifier solutions.

Why GaN Technology?

The advanced Gallium Nitride on Silicon Carbide technology has excellent thermal conductivity, providing high reliability solutions. The high power density of GaN-on-SiC technology enables smaller products that save board space thus saving system cost. It also provides higher impedances which are easier to match across a broad band of frequency spectrum. Radar applications from UHF, L-band, S-band and C-band are well served with the high frequency operation of the wide band-gap technology.

产品广泛适用于军民雷达、电子对抗、电台、通讯等高端领域

GaN									
Name	Output	Gain	Eff	Freq	Pulse	Duty	Voltage	Matching	Package
GaN S-Band Radar									
IGN2429M400	400W	13.0 dB	50%	2.40-2.90 GHz	300us	10%	48V	Input & Output	PL84-1
IGN2729M250C	250W	11.0 dB	59%	2.70-2.90 GHz	300us	10%	50V	Input & Output	PL64A1
IGN2729M400	400W	11.0 dB	55%	2.70-2.90 GHz	300us	10%	50V	Input & Output	PL64A1
IGN2730M65	65W	14.8 dB	58%	2.70-3.00 GHz	300us	20%	32V	Input & Output	PL32A1
IGN2731M80	80W	13.5 dB	51%	2.70-3.10 GHz	100us	10%	40V	Input & Output	PL32A1
IGN2731L200	200W	13.0 dB	54%	2.70-3.10 GHz	3.0ms	30%	42V	Input & Output	PL64A1
IGT2731M130	130W	13.5 dB	55%	2.70-3.10 GHz	300us	10%	50V	50 Ohm	PL44A1
IGN2731M5	5W	15.0 dB	48%	2.70-3.10 GHz	300us	10%	40V	Input & Output	PL32A1
IGN2731M200	200W	13.5 dB	54%	2.70-3.10 GHz	300us	10%	44V	Input & Output	PL64A1
IGN2732M10	10W	15.5 dB	48%	2.70-3.20 GHz	100us	10%	40V	Input & Output	PL32A2
IGT2735M30	30W	12.0 dB	50%	2.70-3.50 GHz	300us	10%	32V	50 Ohm	PL44A1
IGN2735M250	250W	10.0 dB	55%	2.70-3.50 GHz	300us	10%	32V	Input & Output	PL84-1
IGN2932M75	75W	13.3 dB	55%	2.90-3.20 GHz	100us	10%	45V	Input & Output	PL32A1
IGN3135M135	135W	12.0 dB	60%	3.10-3.50 GHz	300us	10%	50V	Input & Output	PL32A1
IGN3135L12	12W	16.0 dB	50%	3.10-3.50 GHz	3.0ms	30%	46V	Input	P32A2
IGN3135L115	115W	14.0 dB	51%	3.10-3.50 GHz	3.0ms	30%	46V	Input & Output	PL44C1
IGT3135M135/S	135W	13.5 dB	55%	3.10-3.50 GHz	300us	10%	46V	50 Ohm	PL44A1
GaN Broadband									
IGN0110UM100	100W	12.5 dB	55%	0.10-1.00 GHz	CW	CW	28V	None	PL22D1
GaN C-Band Radar									
IGN4450M50	50W	15.3 dB	55%	4.4 - 5.0 GHz	300us	10%	36V	Input & Output	PL32A2
IGN5259M10	10W	12.5 dB	50%	5.2 - 5.9 GHz	300us	10%	36V	Input & Output	PL32A2
IGN5259M15	15W	15.5 dB	50%	5.2 - 5.9 GHz	300us	10%	36V	Input & Output	PL32A2
IGN5259M20	20W	12.0 dB	60%	5.2 - 5.9 GHz	300us	10%	36V	Input & Output	PL32A2
IGT5259M25	25W	13.0 dB	50%	5.2 - 5.9 GHz	300us	10%	36V	50 Ohm	PL44A1
IGN5259M40	40W	13.5 dB	50%	5.2 - 5.9 GHz	300us	10%	36V	Input & Output	PL32A2
GaN L-Band Avionics									
IGN1012S1000	1000W	16 dB	50%	1025-1150 MHz	32us	2%	50V	Input	PL84A1
IGN1012S30	30W	19 dB	55%	1025-1150 MHz	32us	2%	50V	Input	PL32A2
IGN1012L40	40W	21 dB	60%	1025-1150 MHz	48 X (32us ON, 18us OFF)	6.4% LTDC	50V	Input	PL32A2
IGN1012S40	40W	22 dB	65%	1025-1150 MHz	32us	2%	50V	Input	PL32A2
IGN1011L70	70W	22 dB	65%	1030-1090 MHz	48 X (32us ON, 18us OFF)	6.4% LTDC	50V	Input	PL32A2
IGN1011L120	120W	20 dB	60%	1030-1090 MHz	48 X (32us ON, 18us OFF)	6.4% LTDC	50V	Input	PL44C1
IGN1011L1000	1000W	16 dB	60%	1030-1090MHz	48 X (32us ON, 18us OFF)	6.4% LTDC	50V	Input	PL84A1

以上产品技术数据为典型值，频率在实际应用中可扩展，如需详细了解或定制，请联系我们或参考integra网站:www.integrattech.com

联系电话: 021-56068798

以上数据仅供参考

产品广泛适用于军民雷达、电子对抗、电台、通讯等高端领域

GaN									
Name	Output	Gain	Eff	Freq	Pulse	Duty	Voltage	Matching	Package
GaN L-Band Avionics									
IGN1011L60	60W	19. dB	65%	1030-1090MHz	48 X (32us ON, 18us OFF)	6.4% LTDC	50V	Input	PL32A2
IGN1011M400	400W	16. dB	65%	1030-1090MHz	128μs	2%	50V	Input	PL64A1
IGN1011M600	600W	16. dB	65%	1030-1090MHz	128μs	2%	50V	Input	PL64A1
IGN1011M800	800W	16. dB	60%	1030-1090MHz	128μs	2%	50V	Input	PL84A1
IGN1030M800	800W	17. dB	60%	1030MHz	128μs	2%	50V	Input	PL84A1
IGN1030L800	800W	17. dB	65%	1030MHz	48 X (32us ON, 18us OFF)	6.4% LTDC	50V	Input	PL84A1
IGN1030L1000	1000W	17. dB	65%	1030MHz	48 X (32us ON, 18us OFF)	6.4% LTDC	50V	Input	PL84A1
IGN1030M40	40W	22. dB	65%	1030MHz	300μs	10%	50V	Input	PL32A2
IGN1090M800	800W	17. dB	62%	1090MHz	128μs	2%	50V	Input	PL84A1
IGN0912L500	500W	15. dB	65%	960-1215MHz	444 X (7us ON, 6us OFF)	22.7% LTDC	50V	Input & Output	PL95A1
IGN0912L45	45W	17. dB	57%	960-1215MHz	444 X (7us ON, 6us OFF)	22.7% LTDC	50V	Input	PL32A2
GaN L-Band Radar									
IGN1214M60	60W	19.0 dB	60%	1.20-1.40 GHz	300μs	10%	50V	Input & Output	PL44A1
IGN1214M250	250W	15.5 dB	60%	1.20-1.40 GHz	300μs	10%	50V	Input & Output	PL44C1
IGN1214M500	500W	14.0 dB	60%	1.20-1.40 GHz	300μs	10%	50V	Input & Output	PL95A1
IGN1214L380	380W	11.9 dB	60%	1.20-1.40 GHz	5.0ms	30%	42V	Input & Output	PL95A1
IGN1214L30	35W	16.4 dB	60%	1.20-1.40 GHz	5.0ms	30%	42V	Input & Output	PL32A2
IGN1214M650	650W	14.3 dB	63%	1.20-1.40 GHz	300μs	10%	60V	Input & Output	PL95A1
IGN1214L15	15W	16.3 dB	55%	1.20-1.40 GHz	5ms	30%	50V	Input & Output	PL32A2
IGN1214M120	120W	18.5 dB	60%	1.20-1.40 GHz	300μs	10%	50V	Input & Output	PL44C1
IGN1214L125	125W	18.0 dB	55%	1.20-1.40 GHz	2ms	20%	50V	Input & Output	PL44C1
IGN1214M650A	650W	12.5 dB	72%	1.20-1.40 GHz	300μs	10%	50V	Input & Output	PL95A1
IGN1214S1000	1000W	13.9 dB	62%	1.20-1.40 GHz	5μs	1.5%	65V	Input & Output	PL95A1
GaN Pallets & Modules									
IGNP0110UM100	100W	12.0 dB	55%	0.1-1.0 GHz	CW	CW	28V	50 Ohm	N/A
IGNP2731M400	400W	14.4 dB	57%	2.7 - 3.1 GHz	300μs	10%	48V	50 Ohm	N/A
IGNP2735M500	500W	10.1 dB	54%	2.7 - 3.5 GHz	300μs	10%	32V	50 Ohm	N/A
IGNP2729M800	870W	11.0 dB	58%	2.7-2.9 GHz	300μs	10%	50V	50 Ohm	N/A
IGNP2729M1KW-GPS	1000W	11.0 dB	50%	2.7-2.9 GHz	300μs	10%	50V	50 Ohm	N/A
IGNP4450M180	188W	12.5 dB	55%	4.4-5.0 GHz	300μs	10%	36V	50 Ohm	N/A
IGNP4450M100	100W	14.0 dB	45%	4.4-5.0 GHz	300μs	10%	36V	50 Ohm	N/A
IGNP5259M150	158W	12.9 dB	45%	5.2-5.9 GHz	300μs	10%	36V	50 Ohm	N/A

以上产品技术数据为典型值，频率在实际应用中可扩展，如需详细了解或定制，请联系我们或参考integra网站；www.integrattech.com
 联系电话：021-56068798

以上数据仅供参考

产品广泛适用于军民雷达、电子对抗、电台、通讯等高端领域

BiPolar									
Name	Output	Gain	Eff	Freq	Pulse	Duty	Voltage	Matching	Package
BiPolar L-Band Avionics									
IB1012S50	50W	10.6 dB	49%	1025-1150 MHz	10µs	1%	50V	Input	P32A2
IB1012S150	150W	10.2 dB	53%	1025-1150 MHz	10µs	1%	50V	Input & Output	P44C14
IB1012S500	500W	10.3 dB	54%	1025-1150 MHz	10µs	1%	50V	Input & Output	P54A5
IB1012S800	800W	10.0 dB	50%	1025-1150 MHz	10µs	1%	50V	Input & Output	P64A6
IB1012S1100	1100W	9.8 dB	50%	1025-1150 MHz	10µs	1%	60V	Input & Output	P64A6
IB1012S10	10W	11.3 dB	43%	1025-1150 MHz	10µs	1%	50V	Input & Output	P32C1
IB1012S20	20W	10.4 dB	51%	1025-1150 MHz	10µs	1%	50V	Input & Output	P32A2
IB1011L15	15W	14.5 dB	67%	1030 MHz	32µs on / 18µs off x 48	6.4% LTDC	48V	None	P32A5
IB1011L40	40W	9.7 dB	57%	1030 MHz	32µs on / 18µs off x 48	6.4% LTDC	48V	Input	P32A2
IB1011L110	110W	11.0 dB	65%	1030 MHz	32µs on / 18µs off x 48	6.4% LTDC	48V	Input	P32A2
IB1011L470	470W	10.2 dB	57%	1030 MHz	32µs on / 18µs off x 48	6.4% LTDC	48V	Input	P64A2
IB1011M10	10W	10.4 dB	52%	1030 MHz	0.5µs on / 0.5µs off x 128	1% LTDC	50V	None	P32A2
IB1011M20	20W	13.8 dB	61%	1030 MHz	0.5µs on / 0.5µs off x 128	1% LTDC	50V	None	P32A2
IB1011M70	70W	9.2 dB	65%	1030 MHz	0.5µs on / 0.5µs off x 128	1% LTDC	50V	Input	P32A5
IB1011M140	140W	12.2 dB	56%	1030 MHz	0.5µs on / 0.5µs off x 128	1% LTDC	50V	Input	P32A2
IB1011M190	190W	12.3 dB	75%	1030 MHz	0.5µs on / 0.5µs off x 128	1% LTDC	50V	Input	P32A2
IB1011M250	250W	8.4 dB	62%	1030 MHz	0.5µs on / 0.5µs off x 128	1% LTDC	50V	Input	P32A2
IB1011M350	350W	11.1 dB	72%	1030 MHz	0.5µs on / 0.5µs off x 128	1% LTDC	50V	Input	P32A2
IB1011M660	660W	11.1 dB	57%	1030 MHz	0.5µs on / 0.5µs off x 128	1% LTDC	50V	Input	P64A2
IB1011M800	800W	8.8 dB	52%	1030 MHz	0.5µs on / 0.5µs off x 128	1% LTDC	50V	Input	P64A2
IB1011M1000	1000W	9.2 dB	58%	1030 MHz	0.5µs on / 0.5µs off x 128	1% LTDC	50V	Input	P64A6
IB1011L220	235W	9.3 dB	56%	1030 MHz	32µs on / 18µs off x 48	6.4%	48V	None	P32A5
IB1011M1100	1100W	9.0 dB	44%	1030-1090MHz	32µs	2%	60V	Input & Output	P64A6
IB1011S70	70W	10.4 dB	70%	1030/1090MHz	10µs	1%	50V	Input	P32A2
IB1011S190	190W	12.2 dB	70%	1030/1090MHz	10µs	1%	60V	Input	P32A2
IB1011S250	250W	9.5 dB	61%	1030/1090MHz	10µs	1%	50V	Input	P32A2
IB1011S350	350W	11.5 dB	59%	1030/1090MHz	10µs	1%	50V	Input	P32A2
IB1011S1000	1000W	9.8 dB	57%	1030/1090MHz	10µs	1%	50V	Input	P64A6
IB1011S1500	1500W	9.8 dB	50%	1030/1090MHz	10µs	1%	60V	Input	P64A6
IB450S300	300W	11.1 dB	63%	450 MHz	30µs	10%	40V	Input	P44I1
IB450S500	500W	9.5 dB	68%	450 MHz	30µs	10%	40V	Input	P64A2
IB0607S10	10W	10.2 dB	49%	653-687 MHz	20µs	2%	50V	None	P32A2
IB0607S100	100W	13.1 dB	62%	653-687 MHz	20µs	2%	50V	Input	P32A2
IB0607S1000	1000W	9.3 dB	55%	653-687 MHz	20µs	2%	50V	Input	P64A6

以上产品技术数据为典型值，频率在实际应用中可扩展，如需详细了解或定制，请联系我们或参考integra网站:www.integrattech.com

联系电话: 021-56068798

以上数据仅供参考

产品广泛适用于军民雷达、电子对抗、电台、通讯等高端领域

BiPolar									
Name	Output	Gain	Eff	Freq	Pulse	Duty	Voltage	Matching	Package
BiPolar L-Band Avionics									
IB0912L30	30W	10.7 dB	61%	960-1215 MHz	5.8ms burst	22.70%	36V	Input	P22A1
IB0912L70	70W	11.6 dB	58%	960-1215 MHz	5.8ms burst	22.70%	44V	Input & Output	P22A1
IB0912L200	200W	10.3 dB	58%	960-1215 MHz	5.8ms burst	22.70%	44V	Input & Output	P54A5
IB0912M70	70W	10.6 dB	64%	960-1215 MHz	10us	10%	50V	Input & Output	P32C1
IB0912M210	210W	12.4 dB	53%	960-1215 MHz	10us	10%	50V	Input & Output	P32C1
IB0912M350	350W	10.6 dB	57%	960-1215 MHz	10us	10%	50V	Input & Output	P54A5
IB0912M500	500W	7.8 dB	56%	960-1215 MHz	10us	10%	50V	Input & Output	P64A2
IB0912M600	600W	8.5 dB	53%	960-1215 MHz	10us	10%	50V	Input & Output	P64A28
BiPolar L-Band Radar									
IB1214M6	6W	9.0 dB	47%	1.20-1.40 GHz	100us	10%	28V	Input	P32C1
IB1214M32	32W	10.6 dB	54%	1.20-1.40 GHz	100us	10%	40V	Input	P32A2
IB1214M55	55W	8.6 dB	47%	1.20-1.40 GHz	100us	10%	40V	Input	P32A2
IB1214M130	130W	8.8 dB	53.8%	1.20-1.40 GHz	300us	10%	50V	Input & Output	P32A2
IB1214M150	150W	8.1 dB	50%	1.20-1.40 GHz	100us	10%	40V	Input & Output	P32A2
IB1214M300	300W	7.4 dB	54%	1.20-1.40 GHz	100us	10%	40V	Input & Output	PL64A2
IB1214M375	375W	8.7 dB	59.9%	1.20-1.40 GHz	300us	10%	42V	Input & Output	PL64A28
IB1416S650	650W	8.3 dB	46%	1.45-1.55 GHz	0.5us on / 1.5us off x 50	1% LTDC	50V	Input & Output	PL64A24
IB0810M12	12W	7.6 dB	53%	870-990 MHz	300us	15%	36V	None	P44C3
IB0810M50	50W	8.1 dB	52%	870-990 MHz	300us	15%	36V	Input	P44C3
IB0810M100	100W	10.3 dB	69%	870-990 MHz	300us	15%	36V	Input	P44C3
IB0810M210	210W	8.1 dB	59%	870-990 MHz	300us	15%	36V	Input	P44C3
BiPolar S-Band Radar									
IB2226MH15	15W	10.0 dB	41%	2.25-2.55 GHz	200us	10%	36V	Input & Output	P34A3
IB2226MH110	110W	8.7 dB	42%	2.25-2.55 GHz	200us	10%	36V	Input & Output	P34C4
IB2226MH160	160W	8.5 dB	46%	2.25-2.55 GHz	200us	10%	34V	Input & Output	P34C4
IB2226M80	80W	8.4 dB	48%	2.25-2.55 GHz	200us	10%	36V	Input & Output	P34C4
IB2226M160	160W	8.5 dB	54%	2.25-2.55 GHz	200us	10%	38V	Input & Output	P34C4
IB2729M90	90W	9.8 dB	51%	2.70-2.90 GHz	100us	10%	36V	Input & Output	P32A5
IB2729M170	170W	9.5 dB	50%	2.70-2.90 GHz	100us	10%	36V	Input & Output	P32A5
IB2729M25	25W	9.3 dB	45%	2.70-2.90 GHz	100us	10%	36V	Input & Output	P32C1
IB2729M5	5W	8.1 dB	42%	2.70-2.90 GHz	100us	10%	32V	Input & Output	P32C3
IB2731M110	110W	9.4 dB	50%	2.70-3.10 GHz	200us	10%	36V	Input & Output	P32A5
IB2731MH110	110W	9.2 dB	45%	2.70-3.10 GHz	200us	10%	36V	Input & Output	P34C4
IB2731MH25	25W	9.7 dB	43%	2.70-3.10 GHz	200us	10%	36V	Input & Output	P44L1

以上产品技术数据为典型值，频率在实际应用中可扩展，如需详细了解或定制，请联系我们或参考integra网站；www.integrattech.com
 联系电话：021-56068798

以上数据仅供参考

产品广泛适用于军民雷达、电子对抗、电台、通讯等高端领域

BiPolar									
Name	Output	Gain	Eff	Freq	Pulse	Duty	Voltage	Matching	Package
BiPolar S-Band Radar									
IB2931MH155	55W	8.7 dB	42%	2.90-3.10GHz	100us	10%	36V	Input & Output	P34C4
IB2931MH55	55W	9.0 dB	49%	2.90-3.10GHz	100us	10%	36V	Input & Output	P34C3
IB2934M100	100W	7.9 dB	40%	2.90-3.40GHz	100us	10%	36V	Input & Output	P32A2
IB3134M70	70W	8.2 dB	50%	3.10-3.40GHz	300us	10%	36V	Input & Output	P32A2
IB3134M100	100W	9.5 dB	42%	3.10-3.40GHz	300us	10%	36V	Input & Output	P32A2
IB3134M15	15W	8.3 dB	45%	3.10-3.40GHz	300us	10%	36V	Input & Output	P32C3
IB3134M25	25W	10.1dB	45%	3.10-3.40GHz	300us	10%	36V	Input & Output	P32C1
IB3135MH45	45W	9.3 dB	42%	3.10-3.50GHz	100us	10%	36V	Input & Output	P34C3
IB3135MH5	5W	7.5 dB	30%	3.10-3.50GHz	100us	10%	36V	Input & Output	P34A3
IB3135MH20	20W	7.5 dB	35%	3.10-3.50GHz	100us	10%	36V	Input & Output	P34A3
IB3135MH65	65W	8.2 dB	49%	3.10-3.50GHz	100us	10%	36V	Input & Output	P34C4
IB3135MH75	75W	8.7 dB	49%	3.10-3.50GHz	100us	10%	36V	Input & Output	P34C4
IB3135MH100	100W	9.3 dB	45%	3.10-3.50GHz	100us	10%	36V	Input & Output	P34C4
BiPolar Pallets & Modules									
IBP1214M700	700W	8.0 dB	50%	1.2-1.4 GHz	200us	10%	42V	50 Ohm	N/A
IBPM1030S1K	1000W	37.0dB	40%	1030 MHz	10us	1%	50V	50 Ohm	N/A
IBP1011L900	940W	9.7 dB	50%	1030 MHz	^{32us on} _{18us off x 48}	6.7%	48V	50 Ohm	N/A
IBP2226M300	300W	7.7 dB	40%	2.25-2.55GHz	200us	10%	34V	50 Ohm	N/A
IBP2731MH200	200W	8.0 dB	40%	2.7-3.1 GHz	200us	10%	36V	50 Ohm	N/A
IBP2729M300	300W	7.5 dB	35%	2.7-2.9 GHz	100us	10%	36V	50 Ohm	N/A
IBP2729MH300	320W	8.5 dB	47%	2.7-2.9 GHz	100us	10%	36V	50 Ohm	N/A
IBP2731M200	200W	8.7 dB	38%	2.7-3.1 GHz	200us	10%	36V	50 Ohm	N/A
IBP2731M190A	200W	7.75dB	34%	2.7-3.1 GHz	200us	10%	36V	50 Ohm	N/A
IBP2931M300	300W	8.5 dB	40%	2.9-3.1 GHz	40us	15%	42V	50 Ohm	N/A
IBP2931MH270	305W	8.0 dB	40%	2.9-3.1 GHz	100us	10%	36V	50 Ohm	N/A
IBP2934M190	215W	7.5 dB	45%	2.9-3.4 GHz	100us	10%	36V	50 Ohm	N/A
IBP3134M25	25W	9.8 dB	48%	3.1-3.4 GHz	300us	10%	36V	50 Ohm	N/A
IBP3135M150	150W	7.5 dB	40%	3.1-3.5 GHz	100us	10%	36V	50 Ohm	N/A
IBP3135MH200	227W	8.5 dB	38%	3.1-3.5 GHz	100us	10%	36V	50 Ohm	N/A
IBP3134M220	220W	9.0 dB	40%	3.10-3.4GHz	200us	10%	36V	50 Ohm	N/A
ISM									
IB2856S250	250W	10.5 dB	52%	2.856 GHz	12us	3%	40V	Input & Output	P32A2
IB2856S65	65W	10.9 dB	53%	2.856 GHz	12us	3%	40V	Input & Output	P32A5
IB2856S30	30W	9.8 dB	50%	2.856 GHz	12us	3%	40V	Input & Output	P32A2

以上产品技术数据为典型值，频率在实际应用中可扩展，如需详细了解或定制，请联系我们或参考integra网站:www.integrattech.com

联系电话: 021-56068798

以上数据仅供参考

产品广泛适用于军民雷达、电子对抗、电台、通讯等高端领域

BiPolar									
Name	Output	Gain	Eff	Freq	Pulse	Duty	Voltage	Matching	Package
ISM									
IGN2856S500	500W	11.8 dB	60%	2.856 GHz	12us	3%	50V	Input & Output	PL64A1
IGN2998S500	500W	12.0 dB	52%	2.998 GHz	8μs	1%	50V	Input & Output	PL64A1
IB3000S60	60W	11.7 dB	52%	3.000 GHz	12μs	1%	40V	Input & Output	P32A2
IB3000S200	200W	9.4 dB	48%	3.000 GHz	12μs	1%	40V	Input & Output	P32A2

LDMOS									
Name	Output	Gain	Eff	Freq	Pulse	Duty	Voltage	Matching	Package
LDMOS L-Band Avionics									
ILD1012S500HV	500W	16.1 dB	45%	1025-1150 MHz	10μs	1%	50V	Input & Output	PL84A1
ILD1011L20HV	20W	15.0 dB	43%	1030 & 1090 MHz	ELM Mode S: 48 x (32us)	6.40%	50V	None	PL32A1
ILD1011L200HV	200W	17.0 dB	43%	1030 & 1090 MHz	ELM Mode S: 48 x (32us)	6.40%	50V	Input	PL64A1
ILD1011M15HV	15W	17.0 dB	46%	1030 & 1090 MHz	50μs	2%	50V	Output	PL32A1
ILD1011M275HV	275W	14.9 dB	53%	1030 & 1090 MHz	50μs	2%	50V	Input & Output	PL84A1
ILD1011M550HV	550W	16.6 dB	47%	1030 & 1090 MHz	50μs	2%	50V	Input & Output	PL84A1
ILD1011M1000HVC	1000W	17.3 dB	55%	1030 MHz	50μs	10%	50V	Input	PL124A1
ILD1011L950HV	950W	15.5 dB	52%	1030 MHz	ELM Mode S: 48 x (32us)	6.40%	50V	Input	PL124A1
ILD1011M160HV	160W	16.5 dB	53%	1030/1090 MHz	50μs	2%	50V	Input	PL32A1
ILD1011M280HV	280W	15.6 dB	48%	1030/1090 MHz	50μs	2%	50V	Input	PL84A1
ILD0912M15HV	15W	14.2 dB	42%	960-1215 MHz	10μs	10%	50V	None	PL32A1
ILD0912M60	60W	16.8 dB	48%	960-1215 MHz	10μs	10%	30V	Input & Output	PL44B1
ILD0912M150HV	150W	8.8 dB	47%	960-1215 MHz	10μs	10%	50V	Input & Output	PL84A1
ILD0912M400HV	400W	9.1 dB	46%	960-1215 MHz	10μs	10%	50V	Input & Output	PL95A1
LDMOS L-Band									
ILD1214M10	10W	13.2 dB	48%	1.20-1.40 GHz	200μs	10%	30V	Output	PL32A1
ILD1214M60	60W	13.7 dB	48%	1.20-1.40 GHz	300μs	10%	30V	Input & Output	PL44B1
ILD1214L250	250W	12.5 dB	60%	1.20-1.40 GHz	1ms	10%	30V	Input & Output	PL124A1
ILD1214EL40	40W	14.2 dB	40%	1.20-1.40 GHz	16ms	50%	30V	Input	P32C1
ILD1214EL200	200W	12.1 dB	42%	1.20-1.40 GHz	16ms	50%	30V	Input & Output	PL124A1
LDMOS S-Band									
ILD2731M30	30W	12.5 dB	46%	2.70-3.10 GHz	100μs	10%	28V	Input & Output	PL32A1
ILD2731M60	60W	10.7 dB	43%	2.70-3.10 GHz	300μs	10%	32V	Input & Output	PL32A1
ILT2731M15	15W	12.1 dB	50%	2.70-3.10 GHz	300μs	10%	32V	50 Ohm	PL32A2
ILT2731M30	30W	11.5 dB	50%	2.70-3.10 GHz	300μs	10%	32V	50 Ohm	PL32A2

以上产品技术数据为典型值，频率在实际应用中可扩展，如需详细了解或定制，请联系我们或参考 integra 网站: www.integrattech.com
 联系电话: 021-56068798

以上数据仅供参考

产品广泛适用于军民雷达、电子对抗、电台、通讯等高端领域

LDMOS									
Name	Output	Gain	Eff	Freq	Pulse	Duty	Voltage	Matching	Package
LDMOS S-Band									
ILT2731M130	130W	11.7 dB	43%	2.70-3.10 GHz	300 μ s	10%	32V	50 Ohm	P64H2
ILD2731M140	140W	11.0 dB	45%	2.70-3.10 GHz	300 μ s	10%	32V	Input & Output	PL84A1
ILD2735M120	120W	10.0 dB	33%	2.70-3.50 GHz	300 μ s	10%	32V	Input & Output	PL124A1
ILD2933M130	130W	11.0 dB	45%	2.90-3.30 GHz	300 μ s	10%	32V	Input & Output	PL84A1
ILT3035M15	15W	13.0 dB	45%	3.00-3.50 GHz	300 μ s	10%	32V	50 Ohm	PL32A2
ILT3035M30	30W	12.5 dB	45%	3.00-3.50 GHz	300 μ s	10%	32V	50 Ohm	PL32A2
ILD3135M30	30W	10.4 dB	40%	3.10-3.50 GHz	300 μ s	10%	32V	Input & Output	PL32A1
ILD3135EL20	20W	9.9 dB	35%	3.10-3.50 GHz	16ms	50%	28V	Input & Output	PL32A1
ILD3135M120	120W	10.4 dB	41%	3.10-3.50 GHz	300 μ s	10%	32V	Input & Output	PL84A1
ILD3135M180	180W	11.0 dB	37%	3.10-3.50 GHz	300 μ s	10%	32V	Input & Output	PL124A2
LDMOS Pallets & Modules									
ILP1214EL200	212W	22.3 dB	45%	1.2-1.4 GHz	16ms	50%	30V	50 Ohm	N/A
ILP2731M260	280W	10.6 dB	35%	2.7-3.1 GHz	300 μ s	10%	32V	50 Ohm	N/A
ILMP2731M260	280W	22.8 dB	44%	2.7-3.1 GHz	300 μ s	10%	32V	50 Ohm	N/A
ILP3135M240	250W	9.8 dB	37%	3.1-3.5 GHz	300 μ s	10%	32V	50 Ohm	N/A
ILMP3135M240	250W	21.0 dB	32%	3.1-3.5 GHz	300 μ s	10%	32V	50 Ohm	N/A
LDMOS UHF									
ILD0506EL350	350W	14.5 dB	53%	480-610 MHz	15ms	33%	45V	Input	PL124A1

VDMOS									
Name	Output	Gain	Eff	Freq	Pulse	Duty	Voltage	Matching	Package
VDMOS Broadband									
IDM175CW300	300W	14.5 dB	55%	1~200 MHz	CW	CW	50V	None	P4415
IDM500CW200	200W	11.0 dB	66%	1~500 MHz	CW	CW	28V	None	P4411
IDM500CW300	300W	9.5 dB	68%	1~500 MHz	CW	CW	28V	None	P4411
IDM165L650	650W	9.2 dB	62%	125-167 MHz	1ms	20%	34V	None	P4411
IDM265L650	650W	8.0 dB	58%	190-265 MHz	1ms	20%	34V	None	P44C5X2
IDM30512CW20	20W	-	-	30-512 MHz	CW	CW	28V	None	P22D1
IDM30512CW50	50W	10. dB	50%	30-512 MHz	CW	CW	28V	None	P4411
IDM30512CW100	100W	-	-	30-512 MHz	CW	CW	28V	None	P4412

以上产品技术数据为典型值，频率在实际应用中可扩展，如需详细了解或定制，请联系我们或参考integra网站:www.integrattech.com

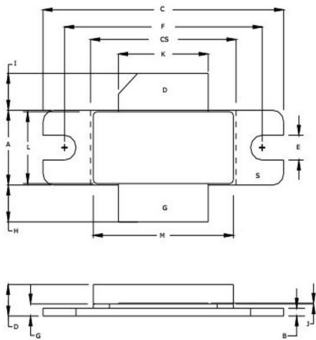
联系电话: 021-56068798

以上数据仅供参考

产品广泛适用于军民雷达、电子对抗、电台、通讯等高端领域

Package

PL84A1



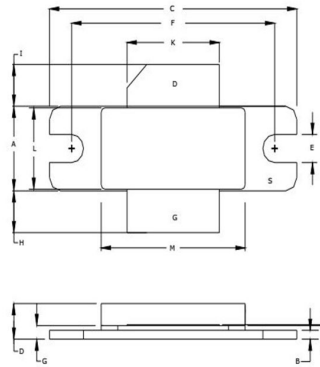
'S' VERSION USE DIM CS
NON 'S' VERSION USE DIM C

DIM	INCHES		MILLIMETERS	
	MIN	MAX	MIN	MAX
A	0.380	0.390	9.65	9.90
B	0.035	0.045	0.89	1.14
C	1.335	1.345	33.90	34.16
CS	0.805	0.815	20.44	20.70
D	0.139	0.166	3.53	4.21
E	0.123	0.133	3.12	3.37
F	1.095	1.105	27.81	28.06
G	0.057	0.067	1.44	1.70
H	0.170	0.210	4.32	5.33
I	0.170	0.210	4.32	5.33
J	0.003	0.006	0.08	0.15
K	0.495	0.505	12.57	12.82
L	0.364	0.374	9.24	9.49
M	0.772	0.788	19.60	20.01

PIN SCHEDULE

D	DRAIN
S	SOURCE
G	GATE

PL84-1

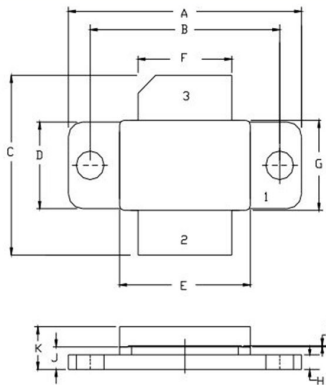


DIM	INCHES		MILLIMETERS	
	MIN	MAX	MIN	MAX
A	0.380	0.390	9.65	9.91
B	0.035	0.045	0.89	1.14
C	1.335	1.345	33.90	34.16
D	0.139	0.164	3.53	4.22
E	0.123	0.133	3.12	3.38
F	1.095	1.105	27.81	28.07
G	0.057	0.067	1.45	1.70
H	0.170	0.210	4.32	5.33
I	0.170	0.210	4.32	5.33
J	0.003	0.006	0.08	0.15
K	0.495	0.505	12.57	12.83
L	0.364	0.374	9.24	9.49
M	0.775	0.785	19.68	19.94

PIN SCHEDULE

D	DRAIN
S	SOURCE
G	GATE

PL64A1



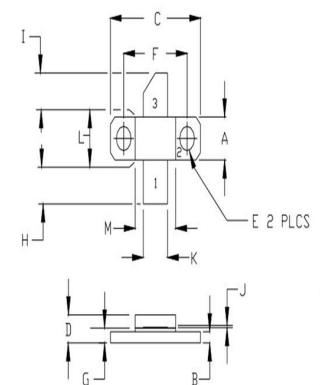
DIM	INCHES		MILLIMETERS	
	MIN	MAX	MIN	MAX
A	1.065	1.075	27.05	27.30
B	0.865	0.875	21.97	22.22
C	0.794	0.804	20.17	20.42
D	0.380	0.390	9.65	9.90
E	0.595	0.605	15.11	15.37
F	0.425	0.435	10.79	11.05
G	0.395	0.405	10.03	10.29
H	0.060	0.070	1.52	1.78
I	0.004	0.006	0.10	0.15
J	0.096	0.106	2.44	2.69
K	0.184	0.196	4.67	4.98

PIN SCHEDULE

1	BASE
2	EMITTER
3	COLLECTOR

LID-P64-1

PL32A1

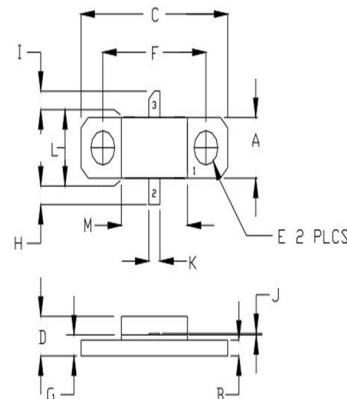


DIM	INCHES		MILLIMETERS	
	MIN	MAX	MIN	MAX
A	0.225	0.235	5.71	5.96
B	0.055	0.065	1.40	1.65
C	0.795	0.805	20.19	20.44
D	0.140	0.160	3.55	4.06
E	0.125	0.135	3.18	3.43
F	0.557	0.567	14.14	14.40
G	0.077	0.087	1.95	2.20
H	0.215	0.245	5.46	6.22
I	0.215	0.245	5.46	6.22
J	0.004	0.006	0.10	0.15
K	0.210	0.220	5.33	5.58
L	0.225	0.235	5.71	5.96
M	0.355	0.365	9.01	9.27

PIN SCHEDULE

1	GATE
2	SOURCE
3	DRAIN

PL32A2

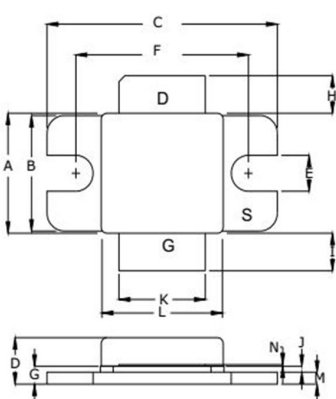


DIM	INCHES		MILLIMETERS	
	MIN	MAX	MIN	MAX
A	0.225	0.235	5.71	5.96
B	0.055	0.065	1.40	1.65
C	0.795	0.805	20.19	20.44
D	0.140	0.160	3.55	4.06
E	0.125	0.135	3.18	3.43
F	0.557	0.567	14.14	14.40
G	0.077	0.087	1.95	2.20
H	0.093	0.107	2.36	2.72
I	0.093	0.107	2.36	2.72
J	0.004	0.006	0.10	0.15
K	0.055	0.065	1.40	1.65
L	0.225	0.235	5.71	5.96
M	0.355	0.365	9.01	9.27

PIN SCHEDULE

1	SOURCE
2	GATE
3	DRAIN

PL44C1



DIM	INCHES		MILLIMETERS	
	MIN	MAX	MIN	MAX
A	0.395	0.405	10.03	10.29
B	0.380	0.390	9.65	9.91
C	0.795	0.805	20.19	20.45
D	0.143	0.177	3.63	4.49
E	0.115	0.125	2.92	3.17
F	0.595	0.605	15.11	15.37
G	0.053	0.065	1.35	1.65
H	0.110	0.140	0.28	0.36
I	0.110	0.140	0.28	0.36
J	0.018	0.022	0.046	0.056
K	0.295	0.305	7.49	7.74
L	0.425	0.435	10.80	11.05
M	0.035	0.045	0.89	1.14
N	0.004	0.007	0.10	0.17

PIN SCHEDULE

D	DRAIN
S	SOURCE
G	GATE

以上产品技术数据为典型值，频率在实际应用中可扩展，如需详细了解或定制，请联系我们或参考 integra 网站; www.integrattech.com

联系电话: 021-56068798

以上数据仅供参考

产品广泛适用于军民雷达、电子对抗、电台、通讯等高端领域

Package

PL44A1

DIM	INCHES		MILLIMETERS	
	MIN	MAX	MIN	MAX
A	0.795	0.805	20.19	20.45
B	0.595	0.605	15.11	15.37
C	0.579	0.649	14.71	16.48
D	0.380	0.390	9.65	9.91
E	0.393	0.405	9.98	10.29
F	0.034	0.044	0.86	1.12
G	0.395	0.405	10.03	10.29
H	0.035	0.045	0.89	1.14
I	0.004	0.006	0.10	0.15
J	0.053	0.067	1.35	1.70
K	0.143	0.181	3.63	4.60

PIN SCHEDULE	
1	SOURCE
2	GATE
3	DRAIN

PL95A1

DIM	INCHES		MILLIMETERS	
	MIN	MAX	MIN	MAX
A	0.535	0.545	13.59	13.84
B	0.035	0.045	0.89	1.14
C	1.335	1.345	33.91	34.16
D	0.145	0.187	3.68	4.75
E	0.123	0.133	3.12	3.38
F	1.095	1.105	27.81	28.07
G	0.057	0.067	1.45	1.70
H	0.170	0.210	4.32	5.33
I	0.170	0.210	4.32	5.33
J	0.003	0.006	0.08	0.15
K	0.595	0.605	15.11	15.37
L	0.515	0.525	13.08	13.34
M	0.871	0.889	22.12	22.58

PIN SCHEDULE	
D	DRAIN
S	SOURCE
G	GATE

PL22D1

DIM	INCHES		MILLIMETERS	
	MIN	MAX	MIN	MAX
A	0.225	0.235	5.72	5.97
B	0.003	0.005	0.08	0.13
C	0.177	0.187	4.50	4.75
D	0.077	0.087	1.96	2.21
E	0.645	0.655	16.38	16.64
F	0.495	0.505	12.57	12.83
G	1.135	1.145	28.83	29.08
H	0.490	0.510	12.44	12.95
J	0.128	0.132	3.25	3.35
K	0.895	0.905	22.73	22.99
L	0.055	0.065	1.40	1.65
M	0.210	0.220	5.35	5.60

PIN SCHEDULE	
1	DRAIN
2	GATE
3	SOURCE

N/A

ALL DIMENSIONS ARE IN INCHES

- PC Board type: Taconic RF-35TC, 30 mils, 1 oz Cu both sides
- Base material: 0.157 inches Aluminum

PL124A1

DIM	INCHES		MILLIMETERS	
	MIN	MAX	MIN	MAX
A	1.615	1.625	41.02	41.27
B	1.395	1.405	35.43	35.69
C	0.634	0.674	16.10	17.12
D	0.395	0.405	10.03	10.29
E	1.219	1.241	30.96	31.52
F	0.455	0.465	11.56	11.81
G	0.075	0.085	1.90	2.16
H	0.120	0.130	3.05	3.30
J	0.535	0.545	13.59	13.84
K	0.059	0.069	14.99	17.53
L	0.081	0.091	2.06	2.31
M	0.164	0.194	4.16	4.93
N	0.004	0.007	0.10	0.18
Q	0.354	0.364	8.99	9.24

PIN SCHEDULE	
1	SOURCE
2	GATE
3	DRAIN

PL44B1

DIM	INCHES		MILLIMETERS	
	MIN	MAX	MIN	MAX
A	0.395	0.405	10.03	10.29
B	0.380	0.390	9.65	9.91
C	0.795	0.805	20.19	20.45
D	0.128	0.156	3.25	3.96
E	0.115	0.125	2.92	3.17
F	0.595	0.605	15.11	15.37
G	0.057	0.067	1.45	1.70
H	0.080	0.120	2.03	3.04
I	0.080	0.120	2.03	3.04
J	0.015	0.025	0.38	0.63
K	0.275	0.285	6.98	7.24
M	0.395	0.405	10.03	10.29
N	0.035	0.045	0.89	1.14

PIN SCHEDULE	
D	DRAIN
S	SOURCE
G	GATE

以上产品技术数据为典型值，频率在实际应用中可扩展，如需详细了解或定制，请联系我们或参考integra网站:www.integrattech.com

联系电话: 021-56068798

以上数据仅供参考

产品广泛适用于军民雷达、电子对抗、电台、通讯等高端领域

Package

P32C1		P64H2																																																																																																																																																																															
	<table border="1"> <thead> <tr> <th rowspan="2">DIM</th> <th colspan="2">INCHES</th> <th colspan="2">MILLIMETERS</th> </tr> <tr> <th>MIN</th> <th>MAX</th> <th>MIN</th> <th>MAX</th> </tr> </thead> <tbody> <tr><td>A</td><td>0.225</td><td>0.235</td><td>5.71</td><td>5.96</td></tr> <tr><td>B</td><td>0.055</td><td>0.065</td><td>1.40</td><td>1.65</td></tr> <tr><td>C</td><td>0.795</td><td>0.805</td><td>20.19</td><td>20.44</td></tr> <tr><td>D</td><td>0.140</td><td>0.160</td><td>3.55</td><td>4.06</td></tr> <tr><td>E</td><td>0.125</td><td>0.135</td><td>3.18</td><td>3.43</td></tr> <tr><td>F</td><td>0.557</td><td>0.567</td><td>14.14</td><td>14.40</td></tr> <tr><td>G</td><td>0.050</td><td>0.070</td><td>1.27</td><td>1.77</td></tr> <tr><td>H</td><td>0.215</td><td>0.245</td><td>5.46</td><td>6.22</td></tr> <tr><td>I</td><td>0.215</td><td>0.245</td><td>5.46</td><td>6.22</td></tr> <tr><td>J</td><td>0.004</td><td>0.006</td><td>0.10</td><td>0.15</td></tr> <tr><td>K</td><td>0.210</td><td>0.220</td><td>5.33</td><td>5.58</td></tr> <tr><td>L</td><td>0.225</td><td>0.235</td><td>5.71</td><td>5.96</td></tr> <tr><td>M</td><td>0.355</td><td>0.365</td><td>9.01</td><td>9.27</td></tr> </tbody> </table> <table border="1"> <thead> <tr> <th colspan="2">PIN SCHEDULE</th> </tr> </thead> <tbody> <tr><td>1</td><td>GATE</td></tr> <tr><td>2</td><td>SOURCE</td></tr> <tr><td>3</td><td>DRAIN</td></tr> </tbody> </table>	DIM	INCHES		MILLIMETERS		MIN	MAX	MIN	MAX	A	0.225	0.235	5.71	5.96	B	0.055	0.065	1.40	1.65	C	0.795	0.805	20.19	20.44	D	0.140	0.160	3.55	4.06	E	0.125	0.135	3.18	3.43	F	0.557	0.567	14.14	14.40	G	0.050	0.070	1.27	1.77	H	0.215	0.245	5.46	6.22	I	0.215	0.245	5.46	6.22	J	0.004	0.006	0.10	0.15	K	0.210	0.220	5.33	5.58	L	0.225	0.235	5.71	5.96	M	0.355	0.365	9.01	9.27	PIN SCHEDULE		1	GATE	2	SOURCE	3	DRAIN		<table border="1"> <thead> <tr> <th rowspan="2">DIM</th> <th colspan="2">INCHES</th> <th colspan="2">MILLIMETERS</th> </tr> <tr> <th>MIN</th> <th>MAX</th> <th>MIN</th> <th>MAX</th> </tr> </thead> <tbody> <tr><td>A</td><td>0.380</td><td>0.390</td><td>9.65</td><td>9.91</td></tr> <tr><td>B</td><td>0.055</td><td>0.065</td><td>1.40</td><td>1.65</td></tr> <tr><td>C</td><td>0.905</td><td>1.005</td><td>22.99</td><td>25.53</td></tr> <tr><td>D</td><td>0.178</td><td>0.188</td><td>4.52</td><td>4.78</td></tr> <tr><td>E</td><td>0.125</td><td>0.135</td><td>3.18</td><td>3.43</td></tr> <tr><td>F</td><td>0.795</td><td>0.805</td><td>20.19</td><td>20.45</td></tr> <tr><td>G</td><td>0.082</td><td>0.092</td><td>2.08</td><td>2.34</td></tr> <tr><td>H</td><td>0.095</td><td>0.105</td><td>2.41</td><td>2.67</td></tr> <tr><td>I</td><td>0.095</td><td>0.105</td><td>2.41</td><td>2.67</td></tr> <tr><td>J</td><td>0.002</td><td>0.004</td><td>0.05</td><td>0.10</td></tr> <tr><td>K</td><td>0.095</td><td>0.105</td><td>2.41</td><td>2.67</td></tr> <tr><td>L</td><td>0.395</td><td>0.405</td><td>2.41</td><td>2.67</td></tr> <tr><td>M</td><td>0.595</td><td>0.605</td><td>15.11</td><td>15.37</td></tr> </tbody> </table> <table border="1"> <thead> <tr> <th colspan="2">PIN SCHEDULE</th> </tr> </thead> <tbody> <tr><td>1</td><td>BASE</td></tr> <tr><td>2</td><td>EMITTER</td></tr> <tr><td>3</td><td>COLLECTOR</td></tr> </tbody> </table>	DIM	INCHES		MILLIMETERS		MIN	MAX	MIN	MAX	A	0.380	0.390	9.65	9.91	B	0.055	0.065	1.40	1.65	C	0.905	1.005	22.99	25.53	D	0.178	0.188	4.52	4.78	E	0.125	0.135	3.18	3.43	F	0.795	0.805	20.19	20.45	G	0.082	0.092	2.08	2.34	H	0.095	0.105	2.41	2.67	I	0.095	0.105	2.41	2.67	J	0.002	0.004	0.05	0.10	K	0.095	0.105	2.41	2.67	L	0.395	0.405	2.41	2.67	M	0.595	0.605	15.11	15.37	PIN SCHEDULE		1	BASE	2	EMITTER	3	COLLECTOR										
DIM	INCHES		MILLIMETERS																																																																																																																																																																														
	MIN	MAX	MIN	MAX																																																																																																																																																																													
A	0.225	0.235	5.71	5.96																																																																																																																																																																													
B	0.055	0.065	1.40	1.65																																																																																																																																																																													
C	0.795	0.805	20.19	20.44																																																																																																																																																																													
D	0.140	0.160	3.55	4.06																																																																																																																																																																													
E	0.125	0.135	3.18	3.43																																																																																																																																																																													
F	0.557	0.567	14.14	14.40																																																																																																																																																																													
G	0.050	0.070	1.27	1.77																																																																																																																																																																													
H	0.215	0.245	5.46	6.22																																																																																																																																																																													
I	0.215	0.245	5.46	6.22																																																																																																																																																																													
J	0.004	0.006	0.10	0.15																																																																																																																																																																													
K	0.210	0.220	5.33	5.58																																																																																																																																																																													
L	0.225	0.235	5.71	5.96																																																																																																																																																																													
M	0.355	0.365	9.01	9.27																																																																																																																																																																													
PIN SCHEDULE																																																																																																																																																																																	
1	GATE																																																																																																																																																																																
2	SOURCE																																																																																																																																																																																
3	DRAIN																																																																																																																																																																																
DIM	INCHES		MILLIMETERS																																																																																																																																																																														
	MIN	MAX	MIN	MAX																																																																																																																																																																													
A	0.380	0.390	9.65	9.91																																																																																																																																																																													
B	0.055	0.065	1.40	1.65																																																																																																																																																																													
C	0.905	1.005	22.99	25.53																																																																																																																																																																													
D	0.178	0.188	4.52	4.78																																																																																																																																																																													
E	0.125	0.135	3.18	3.43																																																																																																																																																																													
F	0.795	0.805	20.19	20.45																																																																																																																																																																													
G	0.082	0.092	2.08	2.34																																																																																																																																																																													
H	0.095	0.105	2.41	2.67																																																																																																																																																																													
I	0.095	0.105	2.41	2.67																																																																																																																																																																													
J	0.002	0.004	0.05	0.10																																																																																																																																																																													
K	0.095	0.105	2.41	2.67																																																																																																																																																																													
L	0.395	0.405	2.41	2.67																																																																																																																																																																													
M	0.595	0.605	15.11	15.37																																																																																																																																																																													
PIN SCHEDULE																																																																																																																																																																																	
1	BASE																																																																																																																																																																																
2	EMITTER																																																																																																																																																																																
3	COLLECTOR																																																																																																																																																																																
	<table border="1"> <thead> <tr> <th rowspan="2">DIM</th> <th colspan="2">INCHES</th> <th colspan="2">MILLIMETERS</th> </tr> <tr> <th>MIN</th> <th>MAX</th> <th>MIN</th> <th>MAX</th> </tr> </thead> <tbody> <tr><td>A</td><td>1.615</td><td>1.625</td><td>41.02</td><td>41.27</td></tr> <tr><td>B</td><td>1.395</td><td>1.405</td><td>35.43</td><td>35.69</td></tr> <tr><td>C</td><td>0.634</td><td>0.674</td><td>16.10</td><td>17.12</td></tr> <tr><td>D</td><td>0.395</td><td>0.405</td><td>10.03</td><td>10.29</td></tr> <tr><td>E</td><td>1.219</td><td>1.241</td><td>30.96</td><td>31.52</td></tr> <tr><td>F</td><td>0.455</td><td>0.465</td><td>11.56</td><td>11.81</td></tr> <tr><td>G</td><td>0.075</td><td>0.085</td><td>1.90</td><td>2.16</td></tr> <tr><td>H</td><td>0.120</td><td>0.130</td><td>3.05</td><td>3.30</td></tr> <tr><td>J</td><td>0.535</td><td>0.545</td><td>13.59</td><td>13.84</td></tr> <tr><td>K</td><td>0.059</td><td>0.069</td><td>14.99</td><td>17.53</td></tr> <tr><td>L</td><td>0.081</td><td>0.091</td><td>2.06</td><td>2.31</td></tr> <tr><td>M</td><td>0.164</td><td>0.194</td><td>4.16</td><td>4.93</td></tr> <tr><td>N</td><td>0.004</td><td>0.007</td><td>0.10</td><td>0.18</td></tr> <tr><td>D</td><td>0.354</td><td>0.364</td><td>8.99</td><td>9.24</td></tr> </tbody> </table> <table border="1"> <thead> <tr> <th colspan="2">PIN SCHEDULE</th> </tr> </thead> <tbody> <tr><td>1</td><td>SOURCE</td></tr> <tr><td>2</td><td>GATE</td></tr> <tr><td>3</td><td>DRAIN</td></tr> </tbody> </table>	DIM	INCHES		MILLIMETERS		MIN	MAX	MIN	MAX	A	1.615	1.625	41.02	41.27	B	1.395	1.405	35.43	35.69	C	0.634	0.674	16.10	17.12	D	0.395	0.405	10.03	10.29	E	1.219	1.241	30.96	31.52	F	0.455	0.465	11.56	11.81	G	0.075	0.085	1.90	2.16	H	0.120	0.130	3.05	3.30	J	0.535	0.545	13.59	13.84	K	0.059	0.069	14.99	17.53	L	0.081	0.091	2.06	2.31	M	0.164	0.194	4.16	4.93	N	0.004	0.007	0.10	0.18	D	0.354	0.364	8.99	9.24	PIN SCHEDULE		1	SOURCE	2	GATE	3	DRAIN		<table border="1"> <thead> <tr> <th rowspan="2">DIM</th> <th colspan="2">INCHES</th> <th colspan="2">MILLIMETERS</th> </tr> <tr> <th>MIN</th> <th>MAX</th> <th>MIN</th> <th>MAX</th> </tr> </thead> <tbody> <tr><td>A</td><td>1.335</td><td>1.345</td><td>33.90</td><td>34.16</td></tr> <tr><td>B</td><td>1.095</td><td>1.105</td><td>27.81</td><td>28.07</td></tr> <tr><td>C</td><td>0.780</td><td>0.820</td><td>19.81</td><td>20.83</td></tr> <tr><td>D</td><td>0.395</td><td>0.405</td><td>10.03</td><td>10.29</td></tr> <tr><td>E</td><td>0.420</td><td>0.430</td><td>10.67</td><td>10.92</td></tr> <tr><td>F</td><td>0.220</td><td>0.230</td><td>5.59</td><td>5.84</td></tr> <tr><td>G</td><td>0.200</td><td>0.220</td><td>5.08</td><td>5.59</td></tr> <tr><td>H</td><td>0.119</td><td>0.129</td><td>3.02</td><td>3.27</td></tr> <tr><td>J</td><td>0.430</td><td>0.440</td><td>10.92</td><td>11.18</td></tr> <tr><td>K</td><td>0.060</td><td>0.070</td><td>1.52</td><td>1.78</td></tr> <tr><td>L</td><td>0.102</td><td>0.112</td><td>2.59</td><td>2.84</td></tr> <tr><td>M</td><td>0.195</td><td>0.226</td><td>4.95</td><td>5.74</td></tr> <tr><td>N</td><td>0.004</td><td>0.006</td><td>0.10</td><td>0.15</td></tr> <tr><td>D</td><td>0.380</td><td>0.390</td><td>9.65</td><td>9.90</td></tr> </tbody> </table> <table border="1"> <thead> <tr> <th colspan="2">PIN SCHEDULE</th> </tr> </thead> <tbody> <tr><td>1</td><td>SOURCE</td></tr> <tr><td>2</td><td>GATE</td></tr> <tr><td>3</td><td>DRAIN</td></tr> </tbody> </table>	DIM	INCHES		MILLIMETERS		MIN	MAX	MIN	MAX	A	1.335	1.345	33.90	34.16	B	1.095	1.105	27.81	28.07	C	0.780	0.820	19.81	20.83	D	0.395	0.405	10.03	10.29	E	0.420	0.430	10.67	10.92	F	0.220	0.230	5.59	5.84	G	0.200	0.220	5.08	5.59	H	0.119	0.129	3.02	3.27	J	0.430	0.440	10.92	11.18	K	0.060	0.070	1.52	1.78	L	0.102	0.112	2.59	2.84	M	0.195	0.226	4.95	5.74	N	0.004	0.006	0.10	0.15	D	0.380	0.390	9.65	9.90	PIN SCHEDULE		1	SOURCE	2	GATE	3	DRAIN
DIM	INCHES		MILLIMETERS																																																																																																																																																																														
	MIN	MAX	MIN	MAX																																																																																																																																																																													
A	1.615	1.625	41.02	41.27																																																																																																																																																																													
B	1.395	1.405	35.43	35.69																																																																																																																																																																													
C	0.634	0.674	16.10	17.12																																																																																																																																																																													
D	0.395	0.405	10.03	10.29																																																																																																																																																																													
E	1.219	1.241	30.96	31.52																																																																																																																																																																													
F	0.455	0.465	11.56	11.81																																																																																																																																																																													
G	0.075	0.085	1.90	2.16																																																																																																																																																																													
H	0.120	0.130	3.05	3.30																																																																																																																																																																													
J	0.535	0.545	13.59	13.84																																																																																																																																																																													
K	0.059	0.069	14.99	17.53																																																																																																																																																																													
L	0.081	0.091	2.06	2.31																																																																																																																																																																													
M	0.164	0.194	4.16	4.93																																																																																																																																																																													
N	0.004	0.007	0.10	0.18																																																																																																																																																																													
D	0.354	0.364	8.99	9.24																																																																																																																																																																													
PIN SCHEDULE																																																																																																																																																																																	
1	SOURCE																																																																																																																																																																																
2	GATE																																																																																																																																																																																
3	DRAIN																																																																																																																																																																																
DIM	INCHES		MILLIMETERS																																																																																																																																																																														
	MIN	MAX	MIN	MAX																																																																																																																																																																													
A	1.335	1.345	33.90	34.16																																																																																																																																																																													
B	1.095	1.105	27.81	28.07																																																																																																																																																																													
C	0.780	0.820	19.81	20.83																																																																																																																																																																													
D	0.395	0.405	10.03	10.29																																																																																																																																																																													
E	0.420	0.430	10.67	10.92																																																																																																																																																																													
F	0.220	0.230	5.59	5.84																																																																																																																																																																													
G	0.200	0.220	5.08	5.59																																																																																																																																																																													
H	0.119	0.129	3.02	3.27																																																																																																																																																																													
J	0.430	0.440	10.92	11.18																																																																																																																																																																													
K	0.060	0.070	1.52	1.78																																																																																																																																																																													
L	0.102	0.112	2.59	2.84																																																																																																																																																																													
M	0.195	0.226	4.95	5.74																																																																																																																																																																													
N	0.004	0.006	0.10	0.15																																																																																																																																																																													
D	0.380	0.390	9.65	9.90																																																																																																																																																																													
PIN SCHEDULE																																																																																																																																																																																	
1	SOURCE																																																																																																																																																																																
2	GATE																																																																																																																																																																																
3	DRAIN																																																																																																																																																																																
	<table border="1"> <thead> <tr> <th rowspan="2">DIM</th> <th colspan="2">INCHES</th> <th colspan="2">MILLIMETERS</th> </tr> <tr> <th>MIN</th> <th>MAX</th> <th>MIN</th> <th>MAX</th> </tr> </thead> <tbody> <tr><td>A</td><td>1.330</td><td>1.350</td><td>33.80</td><td>34.30</td></tr> <tr><td>B</td><td>1.095</td><td>1.105</td><td>27.81</td><td>28.07</td></tr> <tr><td>C</td><td>0.740</td><td>0.760</td><td>18.80</td><td>19.30</td></tr> <tr><td>D</td><td>0.395</td><td>0.405</td><td>10.03</td><td>10.29</td></tr> <tr><td>E</td><td>0.419</td><td>0.429</td><td>10.64</td><td>10.90</td></tr> <tr><td>F</td><td>0.220</td><td>0.230</td><td>5.59</td><td>5.84</td></tr> <tr><td>G</td><td>0.194</td><td>0.204</td><td>4.93</td><td>5.18</td></tr> <tr><td>H</td><td>0.123</td><td>0.133</td><td>3.12</td><td>3.38</td></tr> <tr><td>J</td><td>0.419</td><td>0.429</td><td>10.64</td><td>10.90</td></tr> <tr><td>K</td><td>0.062</td><td>0.072</td><td>1.58</td><td>1.83</td></tr> <tr><td>L</td><td>0.097</td><td>0.117</td><td>2.47</td><td>2.97</td></tr> <tr><td>M</td><td>0.193</td><td>0.225</td><td>4.90</td><td>5.72</td></tr> <tr><td>N</td><td>0.003</td><td>0.006</td><td>0.08</td><td>0.15</td></tr> <tr><td>D</td><td>0.380</td><td>0.390</td><td>9.65</td><td>9.90</td></tr> </tbody> </table> <table border="1"> <thead> <tr> <th colspan="2">PIN SCHEDULE</th> </tr> </thead> <tbody> <tr><td>1</td><td>SOURCE</td></tr> <tr><td>2</td><td>GATE</td></tr> <tr><td>3</td><td>DRAIN</td></tr> </tbody> </table>	DIM	INCHES		MILLIMETERS		MIN	MAX	MIN	MAX	A	1.330	1.350	33.80	34.30	B	1.095	1.105	27.81	28.07	C	0.740	0.760	18.80	19.30	D	0.395	0.405	10.03	10.29	E	0.419	0.429	10.64	10.90	F	0.220	0.230	5.59	5.84	G	0.194	0.204	4.93	5.18	H	0.123	0.133	3.12	3.38	J	0.419	0.429	10.64	10.90	K	0.062	0.072	1.58	1.83	L	0.097	0.117	2.47	2.97	M	0.193	0.225	4.90	5.72	N	0.003	0.006	0.08	0.15	D	0.380	0.390	9.65	9.90	PIN SCHEDULE		1	SOURCE	2	GATE	3	DRAIN		<table border="1"> <thead> <tr> <th rowspan="2">DIM</th> <th colspan="2">INCHES</th> <th colspan="2">MILLIMETERS</th> </tr> <tr> <th>MIN</th> <th>MAX</th> <th>MIN</th> <th>MAX</th> </tr> </thead> <tbody> <tr><td>A</td><td>1.355</td><td>1.365</td><td>34.42</td><td>34.67</td></tr> <tr><td>B</td><td>1.095</td><td>1.105</td><td>27.81</td><td>28.07</td></tr> <tr><td>C</td><td>0.640</td><td>0.660</td><td>16.26</td><td>16.76</td></tr> <tr><td>D</td><td>0.395</td><td>0.405</td><td>10.03</td><td>10.29</td></tr> <tr><td>E</td><td>0.419</td><td>0.429</td><td>10.64</td><td>10.90</td></tr> <tr><td>F</td><td>0.220</td><td>0.230</td><td>5.59</td><td>5.84</td></tr> <tr><td>G</td><td>0.194</td><td>0.204</td><td>4.93</td><td>5.18</td></tr> <tr><td>H</td><td>0.123</td><td>0.133</td><td>3.12</td><td>3.38</td></tr> <tr><td>J</td><td>0.419</td><td>0.429</td><td>10.64</td><td>10.90</td></tr> <tr><td>K</td><td>0.058</td><td>0.062</td><td>1.47</td><td>1.57</td></tr> <tr><td>L</td><td>0.092</td><td>0.112</td><td>2.34</td><td>2.84</td></tr> <tr><td>M</td><td>0.193</td><td>0.225</td><td>4.90</td><td>5.72</td></tr> <tr><td>N</td><td>0.003</td><td>0.006</td><td>0.08</td><td>0.15</td></tr> </tbody> </table> <table border="1"> <thead> <tr> <th colspan="2">PIN SCHEDULE</th> </tr> </thead> <tbody> <tr><td>1</td><td>SOURCE</td></tr> <tr><td>2</td><td>GATE</td></tr> <tr><td>3</td><td>DRAIN</td></tr> </tbody> </table>	DIM	INCHES		MILLIMETERS		MIN	MAX	MIN	MAX	A	1.355	1.365	34.42	34.67	B	1.095	1.105	27.81	28.07	C	0.640	0.660	16.26	16.76	D	0.395	0.405	10.03	10.29	E	0.419	0.429	10.64	10.90	F	0.220	0.230	5.59	5.84	G	0.194	0.204	4.93	5.18	H	0.123	0.133	3.12	3.38	J	0.419	0.429	10.64	10.90	K	0.058	0.062	1.47	1.57	L	0.092	0.112	2.34	2.84	M	0.193	0.225	4.90	5.72	N	0.003	0.006	0.08	0.15	PIN SCHEDULE		1	SOURCE	2	GATE	3	DRAIN					
DIM	INCHES		MILLIMETERS																																																																																																																																																																														
	MIN	MAX	MIN	MAX																																																																																																																																																																													
A	1.330	1.350	33.80	34.30																																																																																																																																																																													
B	1.095	1.105	27.81	28.07																																																																																																																																																																													
C	0.740	0.760	18.80	19.30																																																																																																																																																																													
D	0.395	0.405	10.03	10.29																																																																																																																																																																													
E	0.419	0.429	10.64	10.90																																																																																																																																																																													
F	0.220	0.230	5.59	5.84																																																																																																																																																																													
G	0.194	0.204	4.93	5.18																																																																																																																																																																													
H	0.123	0.133	3.12	3.38																																																																																																																																																																													
J	0.419	0.429	10.64	10.90																																																																																																																																																																													
K	0.062	0.072	1.58	1.83																																																																																																																																																																													
L	0.097	0.117	2.47	2.97																																																																																																																																																																													
M	0.193	0.225	4.90	5.72																																																																																																																																																																													
N	0.003	0.006	0.08	0.15																																																																																																																																																																													
D	0.380	0.390	9.65	9.90																																																																																																																																																																													
PIN SCHEDULE																																																																																																																																																																																	
1	SOURCE																																																																																																																																																																																
2	GATE																																																																																																																																																																																
3	DRAIN																																																																																																																																																																																
DIM	INCHES		MILLIMETERS																																																																																																																																																																														
	MIN	MAX	MIN	MAX																																																																																																																																																																													
A	1.355	1.365	34.42	34.67																																																																																																																																																																													
B	1.095	1.105	27.81	28.07																																																																																																																																																																													
C	0.640	0.660	16.26	16.76																																																																																																																																																																													
D	0.395	0.405	10.03	10.29																																																																																																																																																																													
E	0.419	0.429	10.64	10.90																																																																																																																																																																													
F	0.220	0.230	5.59	5.84																																																																																																																																																																													
G	0.194	0.204	4.93	5.18																																																																																																																																																																													
H	0.123	0.133	3.12	3.38																																																																																																																																																																													
J	0.419	0.429	10.64	10.90																																																																																																																																																																													
K	0.058	0.062	1.47	1.57																																																																																																																																																																													
L	0.092	0.112	2.34	2.84																																																																																																																																																																													
M	0.193	0.225	4.90	5.72																																																																																																																																																																													
N	0.003	0.006	0.08	0.15																																																																																																																																																																													
PIN SCHEDULE																																																																																																																																																																																	
1	SOURCE																																																																																																																																																																																
2	GATE																																																																																																																																																																																
3	DRAIN																																																																																																																																																																																

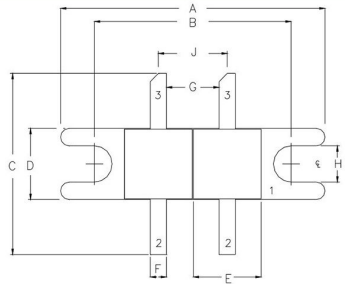
以上产品技术数据为典型值，频率在实际应用中可扩展，如需详细了解或定制，请联系我们或参考 integra 网站; www.integrattech.com
联系电话: 021-56068798

以上数据仅供参考

产品广泛适用于军民雷达、电子对抗、电台、通讯等高端领域

Package

P22D1

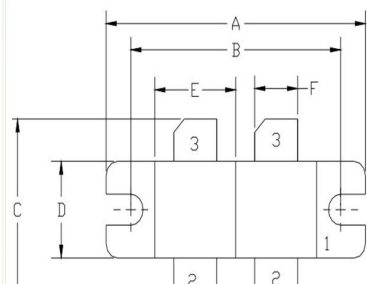


DIM	INCHES		MILLIMETERS	
	MIN	MAX	MIN	MAX
A	0.970	0.980	24.64	24.89
B	0.720	0.730	18.29	18.54
C	0.630	0.670	16.00	17.01
D	0.250	0.260	6.35	6.60
E	0.245	0.235	6.22	6.48
F	0.055	0.065	1.40	1.65
G	0.189	0.199	4.80	5.05
H	0.125	0.135	3.17	3.43
J	0.249	0.259	6.32	6.58
K	0.055	0.065	1.38	1.65
L	0.080	0.090	2.03	2.29
M	0.165	0.175	4.19	4.44
N	0.003	0.006	0.08	0.15



PIN SCHEDULE	
1	SOURCE
2	GATE
3	DRAIN

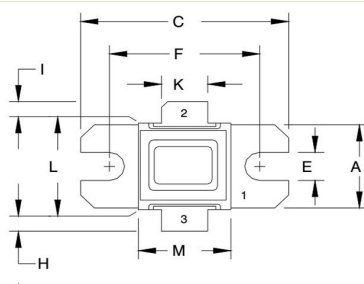
P44I2



DIM	INCHES		MILLIMETERS	
	MIN	MAX	MIN	MAX
A	1.330	1.350	33.80	34.30
B	1.095	1.105	27.81	28.07
C	0.740	0.760	18.80	19.30
D	0.395	0.405	10.03	10.29
E	0.419	0.429	10.64	10.90
F	0.220	0.230	5.59	5.84
G	0.194	0.204	4.93	5.18
H	0.123	0.133	3.12	3.38
J	0.419	0.429	10.64	10.90
K	0.062	0.072	1.58	1.83
L	0.097	0.117	2.47	2.97
M	0.193	0.225	4.90	5.72
N	0.003	0.006	0.08	0.15

PIN SCHEDULE	
1	SOURCE
2	GATE
3	DRAIN

P44C14

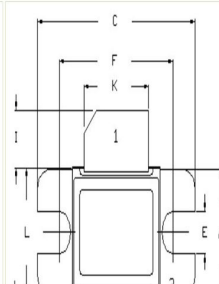


DIM	INCHES		MILLIMETERS	
	MIN	MAX	MIN	MAX
A	0.380	0.390	9.65	9.91
B	0.058	0.062	1.47	1.57
C	0.895	0.905	22.73	22.99
D	0.195	0.205	4.95	5.21
E	0.125	0.135	3.18	3.43
F	0.645	0.655	16.38	16.64
G	0.112	0.132	2.84	3.35
H	0.080	0.120	2.03	3.05
I	0.080	0.120	2.03	3.05
J	0.003	0.005	0.08	0.13
K	0.195	0.205	4.95	5.21
L	0.395	0.405	10.03	10.29
M	0.395	0.405	10.03	10.29



PIN SCHEDULE	
1	BASE
2	COLLECTOR
3	EMITTER

P54A5

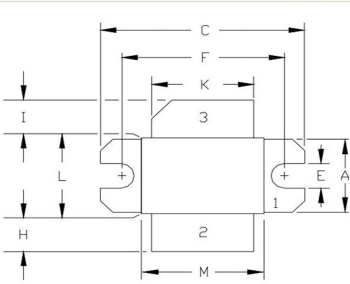


DIM	INCHES		MILLIMETERS	
	MIN	MAX	MIN	MAX
A	0.380	0.390	9.65	9.91
B	0.055	0.065	1.39	1.65
C	0.895	0.905	22.73	22.99
D	0.225	0.235	5.71	5.97
E	0.125	0.135	3.18	3.43
F	0.645	0.655	16.38	16.64
G	0.120	0.130	3.12	3.25
H	0.160	0.190	4.06	4.82
I	0.160	0.190	4.06	4.82
J	0.004	0.006	0.10	0.15
K	0.365	0.375	9.27	9.52
L	0.395	0.405	10.03	10.29
M	0.495	0.505	12.57	12.82



PIN SCHEDULE	
1	COLLECTOR
2	EMITTER
3	BASE

P64A6

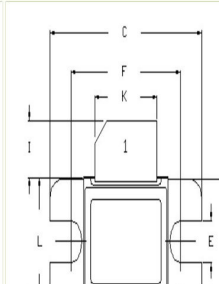


DIM	INCHES		MILLIMETERS	
	MIN	MAX	MIN	MAX
A	0.380	0.390	9.65	9.91
B	0.055	0.065	1.40	1.65
C	0.905	1.005	22.99	25.53
D	0.178	0.188	4.52	4.78
E	0.125	0.135	3.18	3.43
F	0.795	0.805	20.19	20.45
G	0.082	0.092	2.08	2.34
H	0.185	0.215	4.70	5.46
I	0.185	0.215	4.70	5.46
J	0.002	0.004	0.05	0.10
K	0.495	0.505	12.57	12.83
L	0.395	0.405	10.03	10.29
M	0.595	0.605	15.11	15.37



PIN SCHEDULE	
1	BASE
2	EMITTER
3	COLLECTOR

P32C1



DIM	INCHES		MILLIMETERS	
	MIN	MAX	MIN	MAX
A	0.380	0.390	9.65	9.91
B	0.055	0.065	1.39	1.65
C	0.895	0.905	22.73	22.99
D	0.225	0.235	5.71	5.97
E	0.125	0.135	3.18	3.43
F	0.645	0.655	16.38	16.64
G	0.120	0.130	3.12	3.25
H	0.160	0.190	4.06	4.82
I	0.160	0.190	4.06	4.82
J	0.004	0.006	0.10	0.15
K	0.365	0.375	9.27	9.52
L	0.395	0.405	10.03	10.29
M	0.495	0.505	12.57	12.82



PIN SCHEDULE	
1	COLLECTOR
2	EMITTER
3	BASE

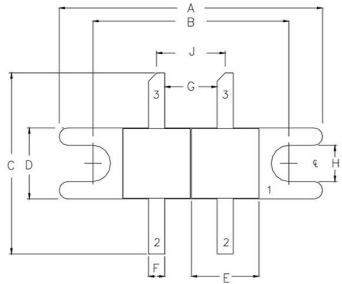
以上产品技术数据为典型值，频率在实际应用中可扩展，如需详细了解或定制，请联系我们或参考integra网站:www.integrattech.com

联系电话: 021-56068798

以上数据仅供参考

Package

P22D1

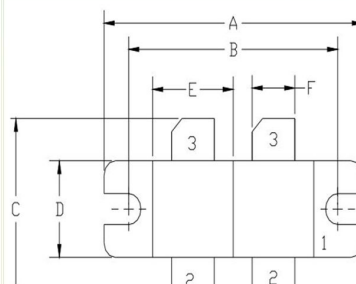


DIM	INCHES		MILLIMETERS	
	MIN	MAX	MIN	MAX
A	0.970	0.990	24.64	24.89
B	0.720	0.730	18.29	18.54
C	0.630	0.670	16.00	17.01
D	0.250	0.260	6.35	6.60
E	0.245	0.255	6.22	6.48
F	0.055	0.065	1.40	1.65
G	0.189	0.199	4.80	5.05
H	0.125	0.135	3.17	3.43
J	0.249	0.259	6.32	6.58
K	0.055	0.065	1.38	1.65
L	0.080	0.090	2.03	2.29
M	0.165	0.175	4.19	4.44
N	0.003	0.006	0.08	0.15



PIN SCHEDULE	
1	SOURCE
2	GATE
3	DRAIN

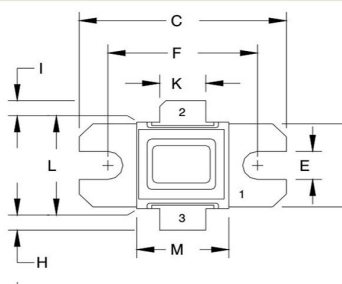
P44I2



DIM	INCHES		MILLIMETERS	
	MIN	MAX	MIN	MAX
A	1.330	1.350	33.80	34.30
B	1.095	1.105	27.81	28.07
C	0.740	0.760	18.80	19.30
D	0.395	0.405	10.03	10.29
E	0.419	0.429	10.64	10.90
F	0.220	0.230	5.59	5.84
G	0.194	0.204	4.93	5.18
H	0.123	0.133	3.12	3.38
J	0.419	0.429	10.64	10.90
K	0.062	0.072	1.58	1.83
L	0.097	0.117	2.47	2.97
M	0.193	0.225	4.90	5.72
N	0.003	0.006	0.08	0.15

PIN SCHEDULE	
1	SOURCE
2	GATE
3	DRAIN

P44C14

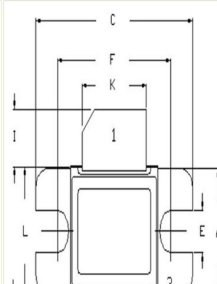


DIM	INCHES		MILLIMETERS	
	MIN	MAX	MIN	MAX
A	0.380	0.390	9.65	9.91
B	0.058	0.062	1.47	1.57
C	0.895	0.905	22.73	22.99
D	0.195	0.205	4.95	5.21
E	0.125	0.135	3.18	3.43
F	0.645	0.655	16.38	16.64
G	0.112	0.132	2.84	3.35
H	0.080	0.120	2.03	3.05
I	0.080	0.120	2.03	3.05
J	0.003	0.005	0.08	0.13
K	0.195	0.205	4.95	5.21
L	0.395	0.405	10.03	10.29
M	0.395	0.405	10.03	10.29

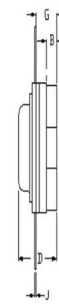


PIN SCHEDULE	
1	BASE
2	COLLECTOR
3	EMITTER

P54A5

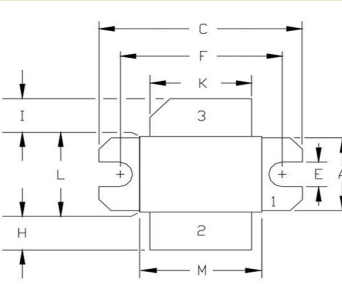


DIM	INCHES		MILLIMETERS	
	MIN	MAX	MIN	MAX
A	0.380	0.390	9.65	9.91
B	0.055	0.065	1.39	1.65
C	0.895	0.905	22.73	22.99
D	0.225	0.235	5.71	5.97
E	0.125	0.135	3.18	3.43
F	0.645	0.655	16.38	16.64
G	0.120	0.130	3.12	3.25
H	0.160	0.190	4.06	4.82
I	0.160	0.190	4.06	4.82
J	0.004	0.006	0.10	0.15
K	0.365	0.375	9.27	9.52
L	0.395	0.405	10.03	10.29
M	0.495	0.505	12.57	12.82



PIN SCHEDULE	
1	COLLECTOR
2	EMITTER
3	BASE

P64A6

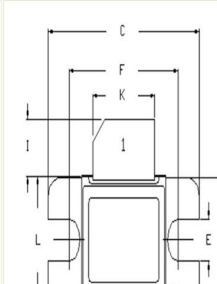


DIM	INCHES		MILLIMETERS	
	MIN	MAX	MIN	MAX
A	0.380	0.390	9.65	9.91
B	0.055	0.065	1.40	1.65
C	0.905	1.005	22.99	25.53
D	0.178	0.188	4.52	4.78
E	0.125	0.135	3.18	3.43
F	0.795	0.805	20.19	20.45
G	0.082	0.092	2.08	2.34
H	0.185	0.215	4.70	5.46
I	0.185	0.215	4.70	5.46
J	0.002	0.004	0.05	0.10
K	0.495	0.505	12.57	12.83
L	0.395	0.405	10.03	10.29
M	0.595	0.605	15.11	15.37



PIN SCHEDULE	
1	BASE
2	EMITTER
3	COLLECTOR

P32C1



DIM	INCHES		MILLIMETERS	
	MIN	MAX	MIN	MAX
A	0.380	0.390	9.65	9.91
B	0.055	0.065	1.39	1.65
C	0.895	0.905	22.73	22.99
D	0.225	0.235	5.71	5.97
E	0.125	0.135	3.18	3.43
F	0.645	0.655	16.38	16.64
G	0.120	0.130	3.12	3.25
H	0.160	0.190	4.06	4.82
I	0.160	0.190	4.06	4.82
J	0.004	0.006	0.10	0.15
K	0.365	0.375	9.27	9.52
L	0.395	0.405	10.03	10.29
M	0.495	0.505	12.57	12.82



PIN SCHEDULE	
1	COLLECTOR
2	EMITTER
3	BASE

以上产品技术数据为典型值，频率在实际应用中可扩展，如需详细了解或定制，请联系我们或参考 integra 网站；www.integrattech.com

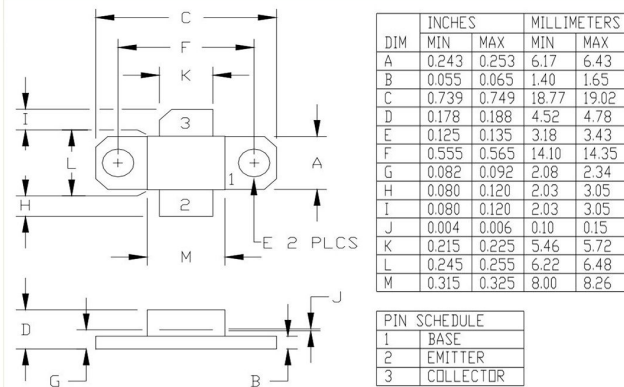
联系电话：021-56068798

以上数据仅供参考

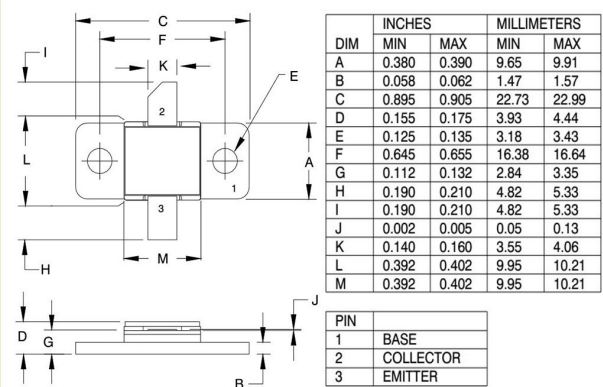
产品广泛适用于军民雷达、电子对抗、电台、通讯等高端领域

Package

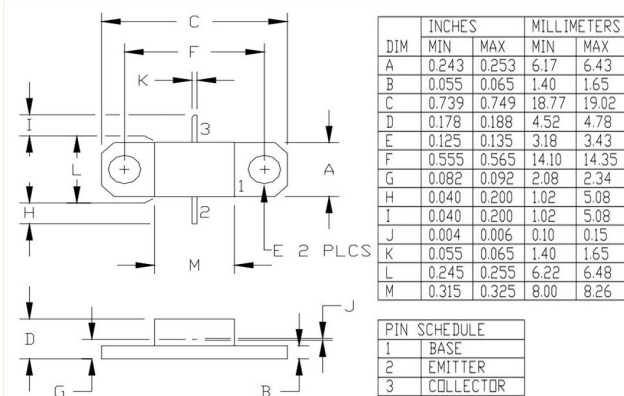
P32A5



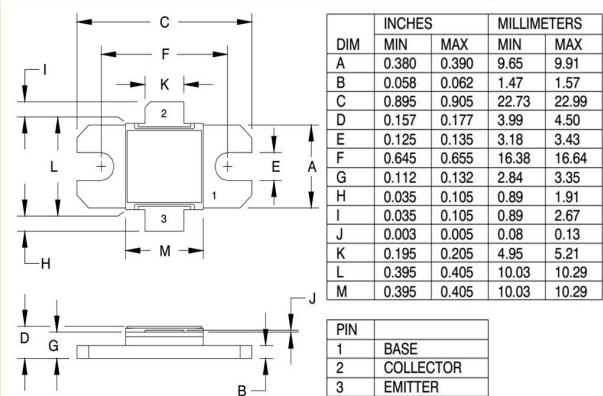
P44L1



P32C3



P34C3



以上产品技术数据为典型值，频率在实际应用中可扩展，如需详细了解或定制，请联系我们或参考integra网站:www.integrattech.com
联系电话: 021-56068798

以上数据仅供参考